

## GLUED INSULATED RAIL JOINTS

### FACTORY ASSEMBLED OR KIT FOR ON-SITE INSTALLATION

Insulated rail joints (IRJ's) are the products which guarantee electrical separation of a rail section for signal and safety purposes. Today's signal and security technology at Railways predominantly works with track electric circuits whereas the rail assists as an electrical conductor. At the demarcation point of the track circuits, the rail is interrupted by insulated rail joints. Hence, the signal block sections of the track are marked off to each other. Insulated rail joints are required to determine the position of the train for the purpose of safe signal control.

### RELIABLE SAFE AND DURABLE

Depending on customer requirements our field insulated joint kit, ETW2 or custom assembled rail joint plugs, ETW1 are produced with carbon steel joint bars for use on heavy haul and transit rail lines. Features 6 hole Insulated Joint Bars tested according to AREMA Chapter 4 requirements for Insulated Rail Joints, they offer the highest safety, reliability and durability in all climates.

RAIL JOINING

RAIL SERVICES

MEASUREMENT

TOOLS & MACHINES

EQUIPMENT

MEMBER OF



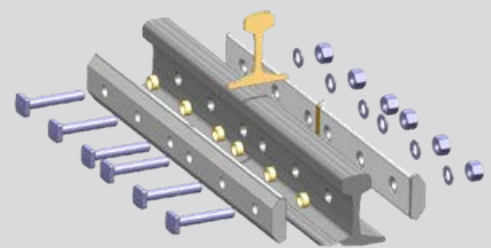
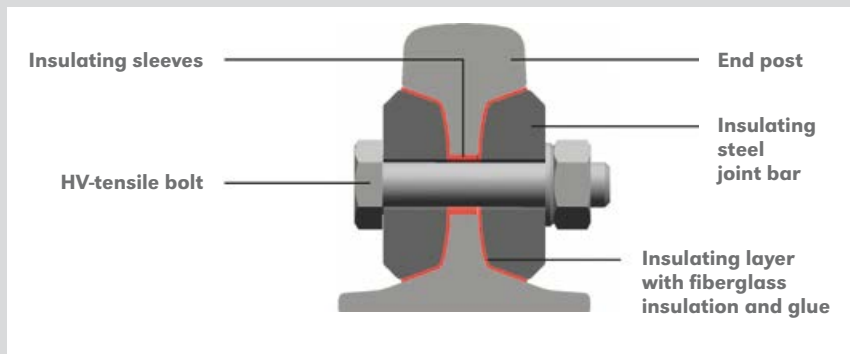
**GOLDSCHMIDT**  
THERMIT GROUP

## OVERVIEW OF INSULATED RAIL JOINTS

Feature	Function	Benefit
Available for the most popular AREMA rail profiles	On 115RE, 132RE, 136RE and 141RE rails	Available for all common flat bottom
Precisely machined carbon steel joint bars in 6 hole configuration	Strong adhesive for load transmission	Use on heavy haul lines and transit systems
Passed qualification testing according to AREMA Chapter 4 testing requirements	Excellent electrical resistance, rolling load and longitudinal compression	Increased safety despite climate conditions
ETW1 rail plug lengths are manufactured according to customer requirements	Rail plugs can be assembled in 20 foot to 40 foot lengths	Maximum durability, customized solutions
Technical support for kit assembling	After sales education and training	Quick and easy field installation possible by trained railroad personnel



1. *Accessories*
2. *Insulating ring*
3. *Two component glue*
4. *End post*
5. *Insulated fishplates*
6. *Wooden box*
7. *Fastening material*



RAIL JOINING

RAIL SERVICES

MEASUREMENT

TOOLS & MACHINES

EQUIPMENT

MEMBER OF  **GOLDSCHMIDT**  
THERMIT GROUP

**Orgo-Thermit, Inc.**  
3500 Colonial Drive North  
Manchester, NJ 08759 USA  
Phone: (732) 657-5781, Fax: (732) 657-5899  
info@orgothermit.com, www.orgothermit.com